



Stevensville Public Schools Building Bonds 2019

Mail Ballot Election

May 7, 2019



Bond Summary



- 2017 Long-range master plan developed for Stevensville School District by MMW Architects using a consensus process with teachers, students, parents, community members and Board members
- Stevensville School Board surveyed every voting household in the district to determine community priorities and support
 - Classroom Additions
 - Modernization of Labs
 - Safety renovations
 - Renovations to buildings & grounds
 - Access and parking
- Two bond issues will be voted on May 7, 2019 – Mail Ballot
 - Stevensville – High School and Elementary Bonds
 - Lone Rock – High School Bond Only



Community Survey of Bond Support Hingston-Roach Group

- Survey Sent to Every Voting Household in Stevensville Schools
 - Lone Rock School Voters Received High School Survey Only

SPS Public Opinion Survey

- Mailed to 4,123 voter households in early Jan.
- 413 returned by Feb. 6.
- 10.0% response rate
- 95% confidence level
- +/- 5% margin of error

** Comments only returned.*

		# Surveys	%	# Surveys	%	%
	<u>Precinct</u>	<u>Mailed</u>	<u>Mailed</u>	<u>Returned</u>	<u>Returned</u>	<u>Difference</u>
Stevi Elem	17	630	15.3%	54	13.1%	-2.2%
Stevi Elem	18	715	17.3%	72	17.4%	0.1%
Stevi Elem	19	841	20.4%	81	19.6%	-0.8%
Stevi Elem	20	720	17.5%	96	23.2%	5.8%
Lone Rock	19	9	0.2%	1	0.2%	0.0%
Lone Rock	21	375	9.1%	27	6.5%	-2.6%
Lone Rock	22	833	20.2%	79	19.1%	-1.1%
				3*	0.7%	0.7%
		4,123	100.0%	413	100.0%	

Overall Results (413 respondents)

PROPOSED PROJECT	YES	NO	UNDE- CIED	NO ANSWER	PRIORITY* (AVG. SCORE)
High School main bldg./gym remodel, east entrance, parking, add'l classroom space	54%	36%	6%	4%	3.73
New relocated Voc-Ed facility, remodel old bldgs	49%	37%	10%	4%	3.15
New gym, performing arts auditorium, connector	31%	56%	8%	4%	2.57
Primary School / K-8 gym remodel, 4 classrooms, entrance, Phillips St. relocation, parking, bus barn	48%	41%	8%	3%	3.44
Grandstands, concessions, restrooms, walk path	42%	48%	7%	3%	2.78
New relocated tennis courts	29%	55%	11%	4%	2.17
New track, refurbished football field	35%	52%	9%	4%	2.52
New 3 rd St. extension, bridge, athletics parking	33%	55%	8%	3%	2.33

5=Very High Priority, 4=High Priority, 3=Neither High nor Low Priority, 2=Low Priority, 1=Very Low Priority

Results by Precinct

- **High School:** received 50+% positive in all precincts.
- **Voc-Ed:** 50+% positive in precincts 20, 19LR, 21, 22.
 - Less in 17-19, but 9-15% Undec.
- **New Gym & Auditorium:** highest % of No responses of all projects (high cost, not critical need).
- **Primary School:** received 50+% positive in 17 and 20; 6%-18% Undecided in 18-19.
 - Issue: relocation of Phillips Street, playground, parking, bus barn
- **Athletic Facilities:** none of them received 50% positive or higher in any precinct.
- Grandstands had highest positive response at 42%.
- Even with Undecided responses, none of athletic projects would reach 50% positive overall.
- **Comments:** projects are worth-while, but should be funded from sources other than a tax increase (grants, donations, entry fees, concessions, etc.)

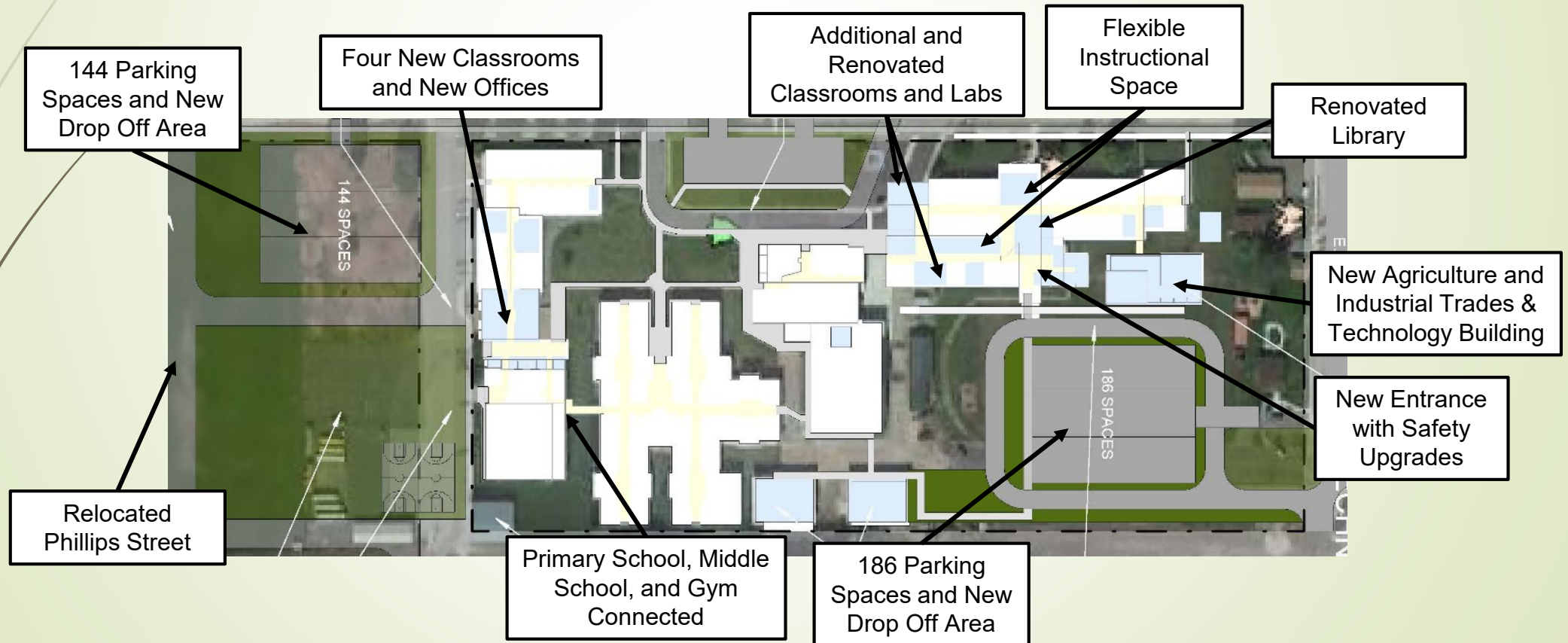
Two Bonds are Proposed on the Ballot

➤ Elementary School Bond

➤ \$6,369,000

➤ High School Bond

➤ \$14,169,000





Elementary Bond

Classrooms, Safety/Security, Renovations of Classroom Lighting, Heating, Restrooms, ADA Access, Relocation of Playground and Parking

1. Four new classrooms connecting K-3 to Elementary Gym accommodating growth and student movement between classes.
2. Safety - new entry and administration area. The entry vestibule is two-sided, with a new main entry on the south side of the building and bus drop off entry on the north side of the building.
3. Energy Savings/Cost Efficiency:
 - Replace Heating Controls
 - LED lighting,
 - Dual pane windows,
 - New fans/heating units in classrooms and common areas
4. Renovate restrooms (ADA)
5. Remodeled special education area /other classroom remodels to accommodate teacher workspace, a growing specialty demands, and handicap accessibility throughout the building.



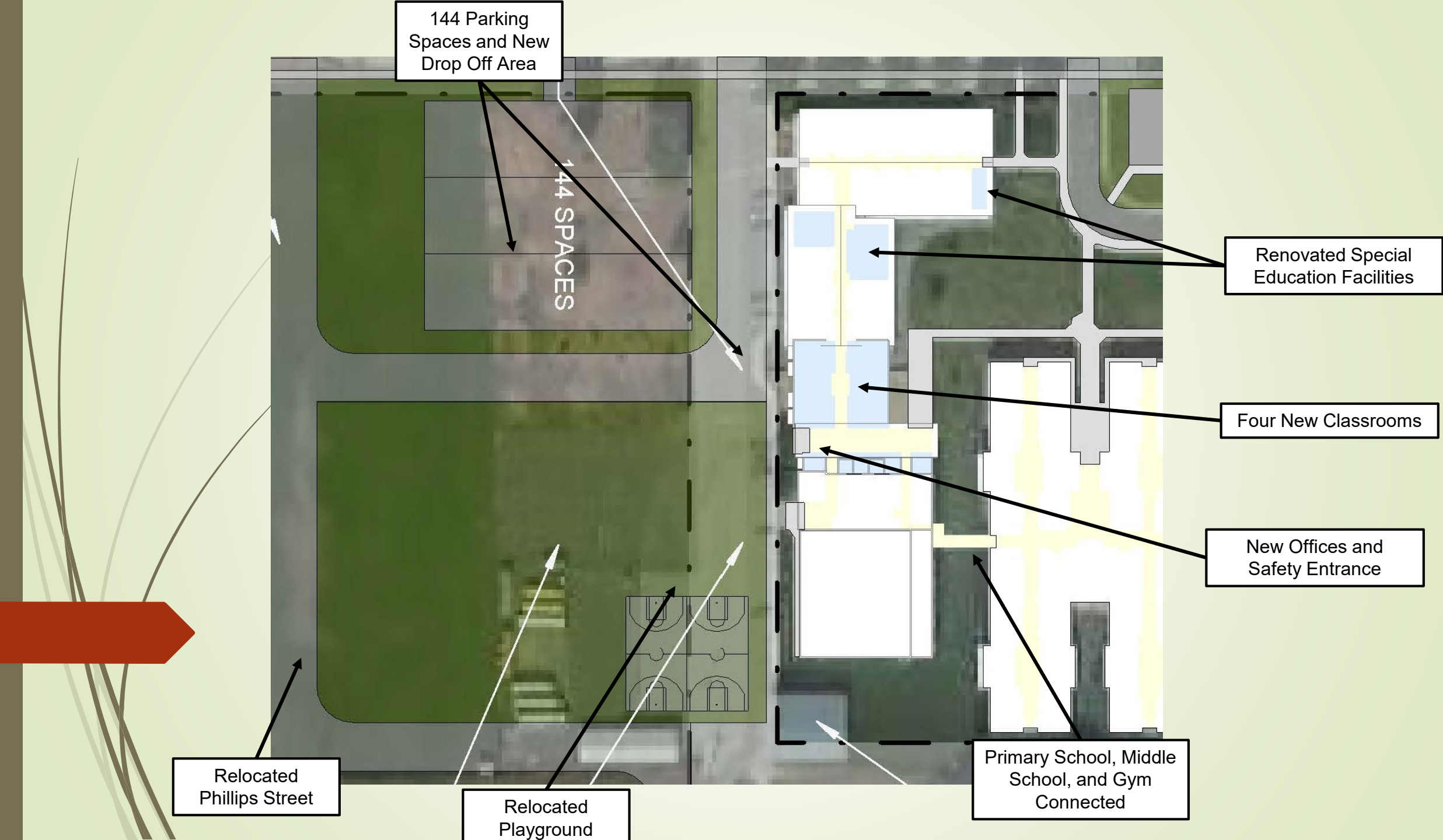
Elementary Continued



4. Exterior windows/building deterioration
5. Drainage around the building exterior
6. Remodel gym - the 4-8 students to have a separate entrance and exit
7. Relocating Phillips Street/parking on the south side to provide a safer transition for parent drop off and access to the playground area.
8. Renovation of the building will require updates to the facility to align with current fire, safety, and accessibility standards.



Elementary School from South (Looking North)



Elementary School Entrance



Elementary School Drainage



Elementary School Playground Access



Special Education and Storage



Elementary School Windows





High School Bond

Classrooms, Commons, Safety/Security, Extensive Deferred Maintenance

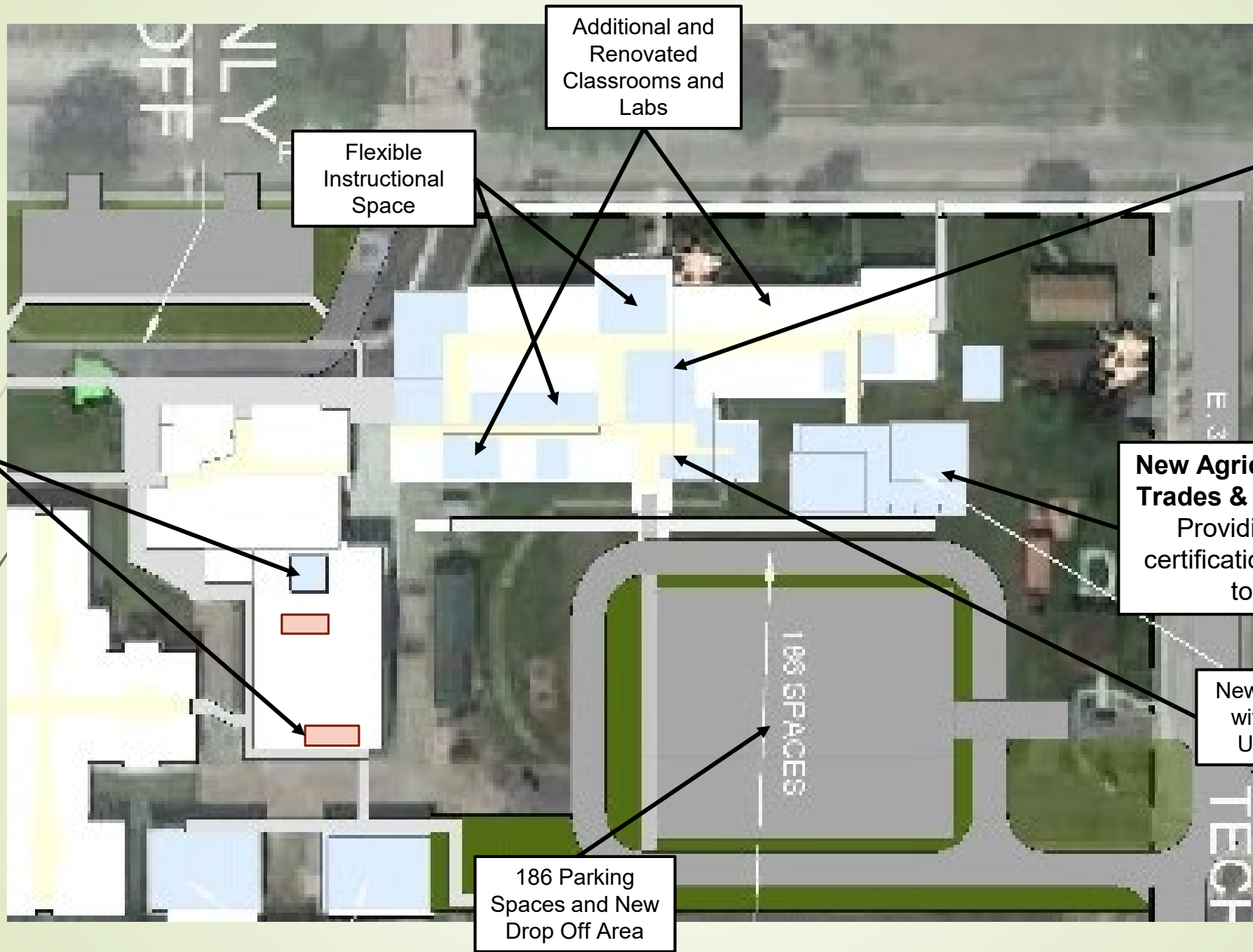
1. Vocational Agriculture and Technical Center to integrate with community businesses and provide school to work/technical training and certifications
2. Renovate science classrooms will be to reflect current instructional standards
3. A new hallway, classrooms and office on the south side of the building to provide access, connections, and improve flow. This single new entry will replace two existing entries
4. Student Safety - The new east side entrance will provide a more secure and safe entry with oversight by the administration. This configuration also reduces the main entries for the building
5. Parking -changing the entry to the east side of the building
6. Energy Savings/Cost Efficiency:
 - Replace 1960 boiler,
 - LED lighting,
 - Dual pane windows,
 - New fans/heating units in classrooms and common areas
7. Replacement of deteriorating asbestos soffit and fascia material on the exterior of the building



High School Bond Continued

8. Renovate building, classrooms, and restroom facilities to accommodate handicap accessibility and provide working fixtures
9. Renovate the library utilizing the current entrance/administration area as flexible instructional space with openings to the west to take advantage of the natural light and mountain views
 - Modern LED lighting to improve dark halls
 - Natural lighting where possible
 - More inviting environment for students
10. Current courtyard will be covered and incorporated into the school for flexible classroom space
11. Move PE and practice field to replace existing field eliminated by the parking area
10. Renovate entrance and locker rooms in Main Gym for accessibility, leaking entry roof, and ADA restrooms
 - Add appropriate number of toilet fixtures (currently only 2 toilet fixtures)
11. Other renovations to wiring, infrastructure, and electronic systems
12. Renovation of the building will require updates to the facility to align with current fire, safety, and accessibility standards





Additional and Renovated Classrooms and Labs

Flexible Instructional Space

Renovated Library

Roof Repair and Locker Room Renovation


New Agriculture and Industrial Trades & Technology Building
Providing the training and certifications our students need to be successful

New Entrance with Safety Upgrades

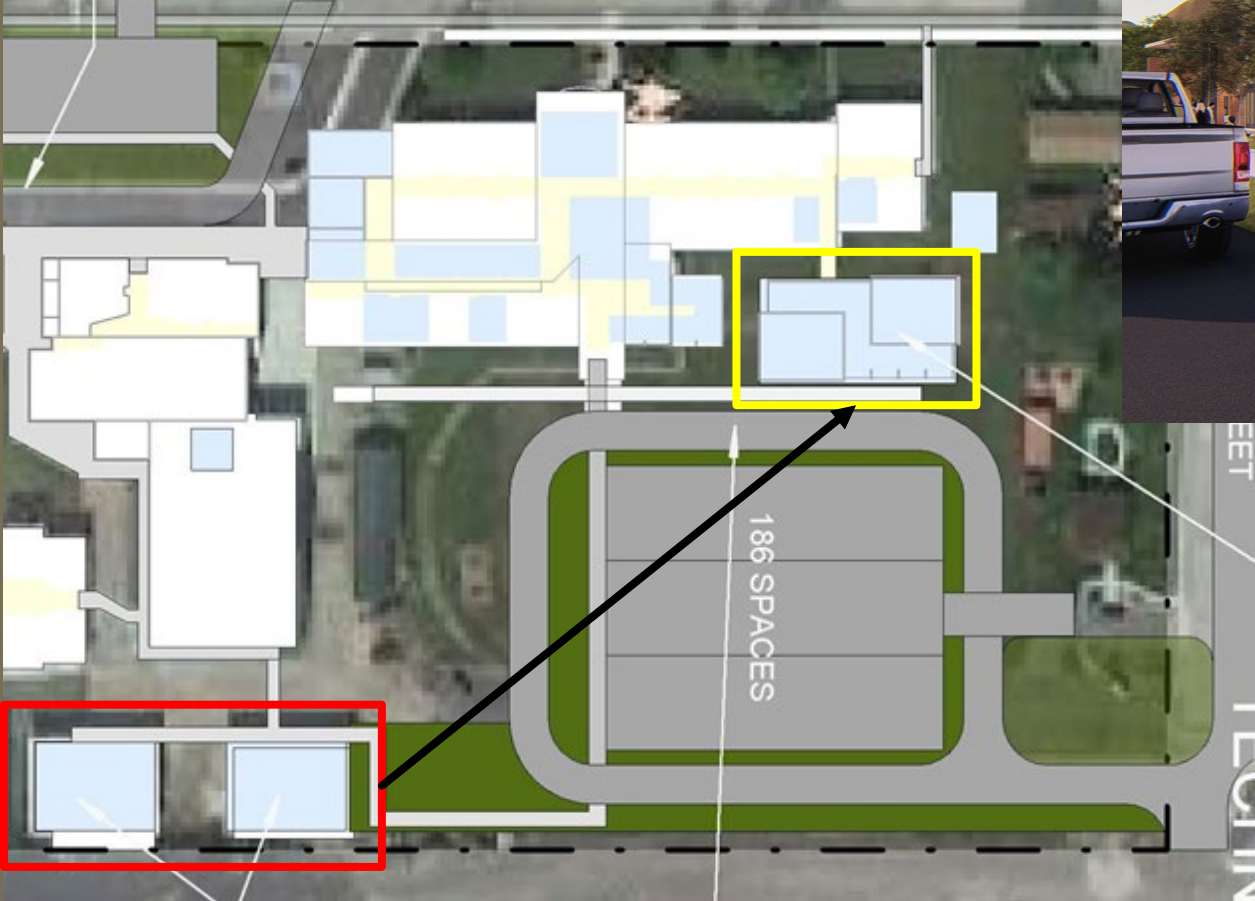
186 Parking Spaces and New Drop Off Area



Shared Bond Costs-Elementary/High School

1. Property access easement and bus lot
 2. Renovation of the bus barn to accommodate maintenance
- 

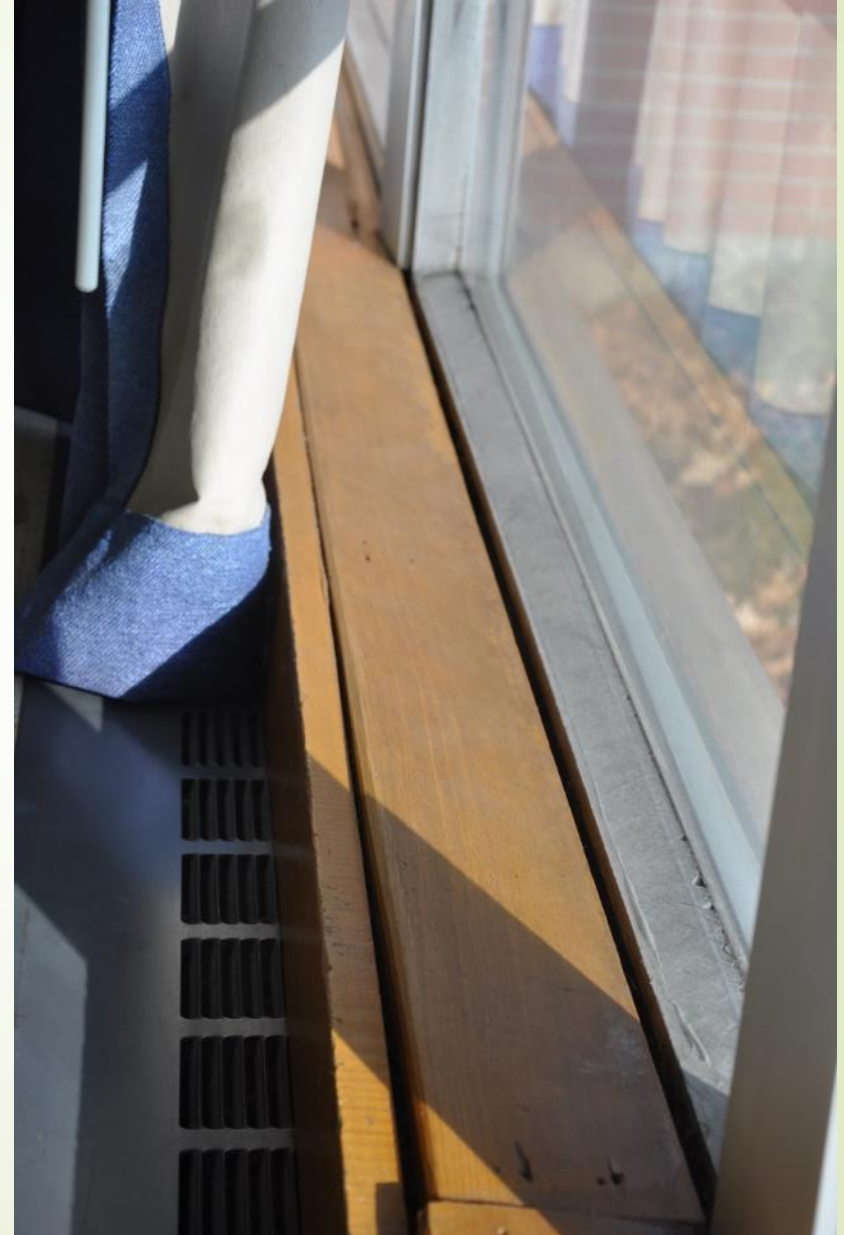
Agriculture and Industrial Trades & Technology Building



High School



High School Windows



High School Entrance



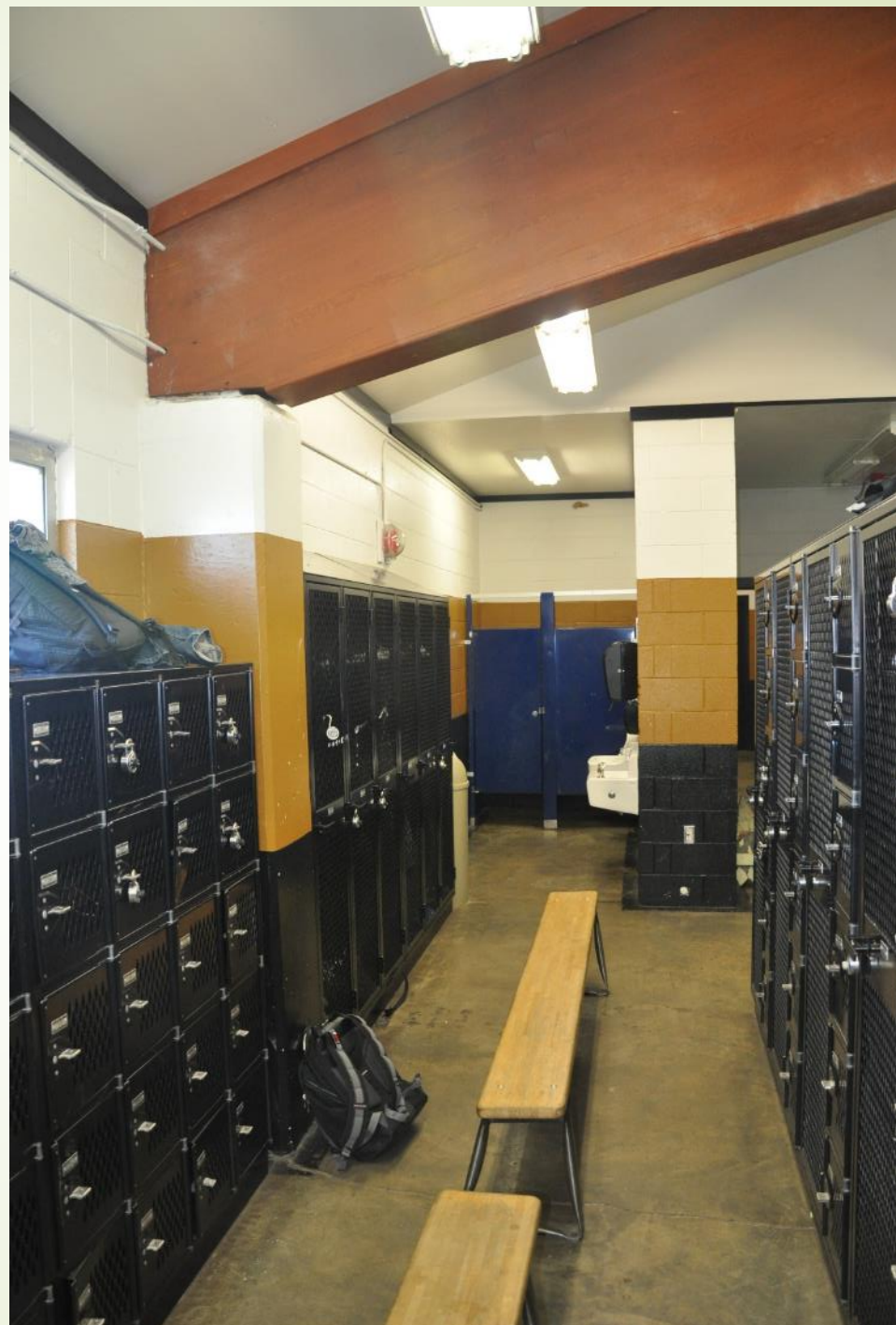
High School Boiler



High School Wiring



Locker Rooms




Stevensville Schools Project Cost Summary

Project	Cost	Cost Share HS/Elem	High School Cost	Elementary School Cost
Elem. School Package #1	\$5,739,488	0/100	0	\$5,739,488
High School Package #1	\$7,654,921	100/0	\$7,654,921	0
High School Package #3	\$1,756,170	100/0	\$1,756,170	0
High School Package #4	\$3,948,750	100/0	\$3,948,750	0
Renovation and Maintenance	\$122,658	50/50	\$61,329	\$61,329
High School Gym Renovation	\$320,451	80/20	\$256,360	\$64,090

Stevensville Schools Project Cost Summary cont.

Project	Cost	Cost Share HS/Elem	High School Cost	Elementary School Cost
Easement and Bussing Property	\$364,000	40/60	\$145,600	\$218,400
Remodel of Existing Ag and Woodshop	\$574,538	60/40	\$344,760	\$229,840
Totals	\$20,538,011		\$14,169,000	\$6,369,000

More Information



STEVENSVILLE
PUBLIC SCHOOLS

CALENDAR CONTACT

ABOUT SCHOOLS **LEVY/BOND INFORMATION** SCHOOL BOARD CURRICULUM & INITIATIVES STUDENT & PARENTS INFINITE CAMPUS HELP EMPLOYEE INFO ALUMNI

2019 SCHOOL BOND ELECTION

2017 TECHNOLOGY LEVY (PASSED)

Our Mission

Stevensville Public Schools are committed to creating a safe, collaborative learning environment centered on students, facilitated by staff and supported by community to ensure growth and achievement for all.

[Learn More](#)

Activate Windows
Go to Settings to activate Windows

LEVY/BOND INFORMATION SCHOOL BOARD CURRICULUM & INITIATIVES STUDENT & PARENTS INFINITE CAMPUS HELP

2019 School Bond Election

Stevensville School District Bond Election May 7, 2019

Open House Schedule
March 28, 2019 (4:00-6:00PM)
April 4, 2019 (5:00-7:00PM)
April 11, 2019 (7:00-9:00PM)
April 17, 2019 (4:00-6:00PM)

Stevensville Primary School

- 144 New Parking Spaces and New Drop Off Area
- Additional and Renovated Classrooms and Labs
- Flexible Instructional Space
- Relocated Phillips Street
- Four New Classrooms and New Offices
- Primary School, Middle School, and Gym Connected
- 186 Parking Spaces and New Drop Off Area
- New Entrance with Safety Upgrades

Stevensville High School

- Renovated Library
- New Agriculture and Industrial Trades & Technology Building
Providing the training and certifications our students need to be successful

Elementary District (Stevensville Only)		High School District (Lone Rock and Stevensville)	
Bond Amount: \$6,369,000	Bond Amount: \$14,169,000		
Without Interest	Without Interest		
Cost per \$100,000 Market Value: \$2.60/Month	Cost per \$200,000 Market Value: \$5.20/Month	Cost per \$100,000 Market Value: \$4.43/Month	Cost per \$200,000 Market Value: \$8.85/Month
\$31.21/Year	\$62.42/Year	\$53.11/Year	\$106.22/Year

The Stevensville School Board voted unanimously to proceed with bond elections for both the Stevensville High School and Elementary School Districts in May, 2019. If passed, the bonds will address enrollment growth, special education space, Agricultural and Industrial Trades & Technology, renovations to buildings and grounds, safety, building access, and parking.

The bond proposal for the Stevensville Elementary School District is \$6,369,000, and the proposal for the Stevensville High School District is \$14,169,000.

In January 2019, Stevensville Public Schools conducted a mail survey of all voting households in the Stevensville and Lone Rock School Districts. The three items on the survey that received the most support from voters are the Primary School remodel, the High School remodel, and the construction of a new Industrial Trades & Technology building. Stevensville business owners and community members surveyed supported the addition of the Agricultural and Industrial Trades & Technology building over athletic facilities repairs. Athletic facility repairs and improvements previously included in the failed 2018 school bond election are not included in the 2019 election.

<https://www.stevensvilleschools.org/2019-school-bond/>
(406)777-5481 ext 136

More Information



ABOUT SCHOOLS LEVY/BOND INFORMATION SCHOOL BOARD CURRICULUM & INITIATIVES STUDENT & PARENTS

-April 17, 2019: Bond Ballots Mailed to Voters

-May 7, 2019: Bond Election Ballots Due back to Ravalli County

Bond Information Items

[-Public Opinion Survey mailed to voters](#)

[-Site Plan/20 Year Master Plan Diagram/Map \(Includes projects not included in the 2019 Bond Election\)](#)

[-Voting District Map \(Stevensville/Lone Rock\)](#)

Bond Cost Information

[Find Your Home Value \(Montana Cadastral\)](#)

[Stevensville Elementary District Residents Bond Calculator \(Combined High School and Elementary School Bonds\)](#)

[Lone Rock Elementary District Residents Bond Calculator \(High School District Bond Only\)](#)

By Owner

County: RAVALLI

Owner Name:

SEARCH

Choose Owner Name...

WALTHALL, ERIC M & JENNIFER L

Summary

Owners

Appraisals

Year	Land Value	Building Value	Total Value	Method
2017	94434	83666	178100	MKT
2017	94434	83666	178100	MKT

By Geocode

Map Land Info

Stevensville Elementary Residents

Stevensville Elementary District Residents Bond Calculator (Combined High School and Elementary School Bond) without interest

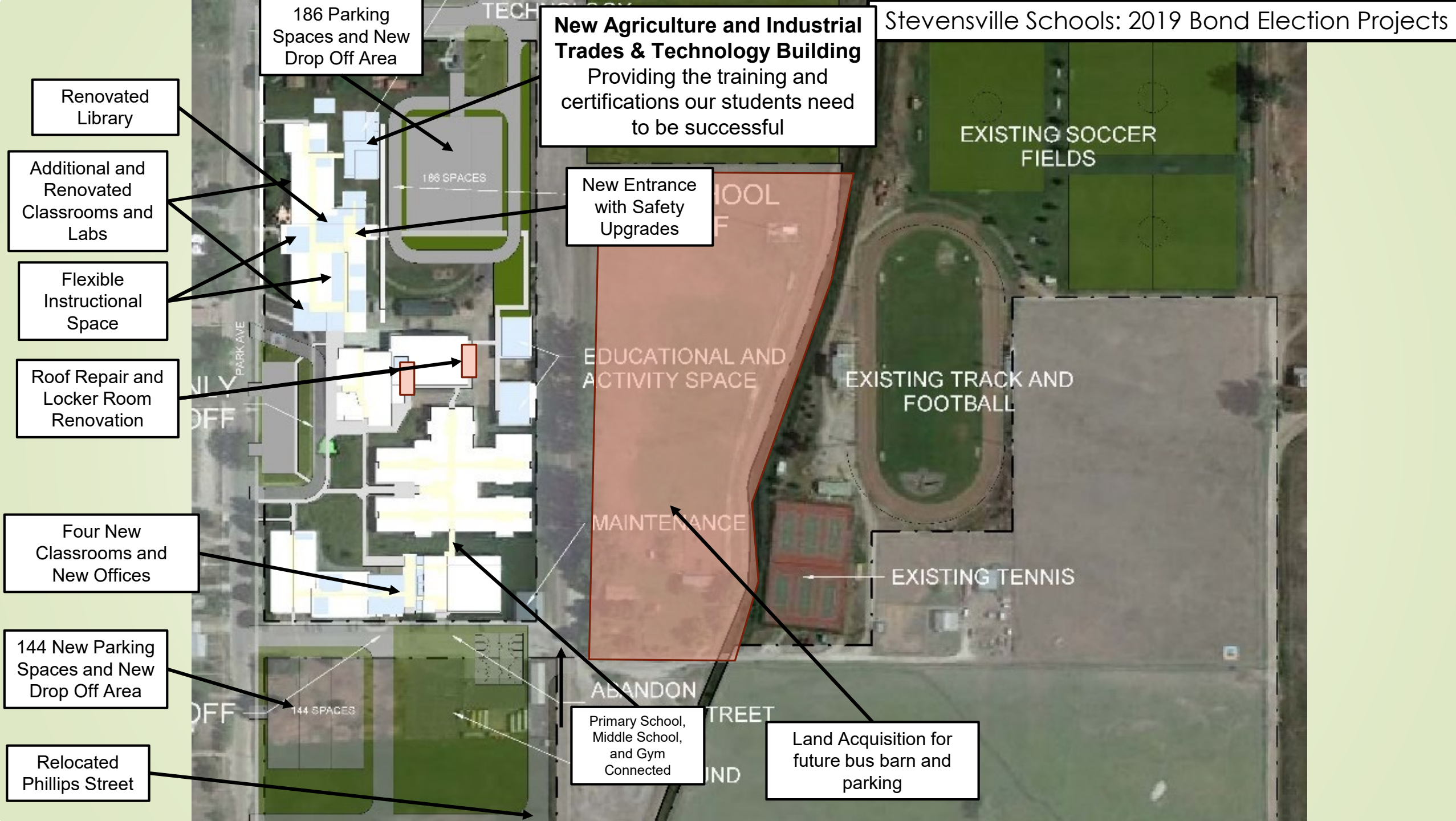
Insert "Current Market Valuation" Amount Here (number):

\$ 178100

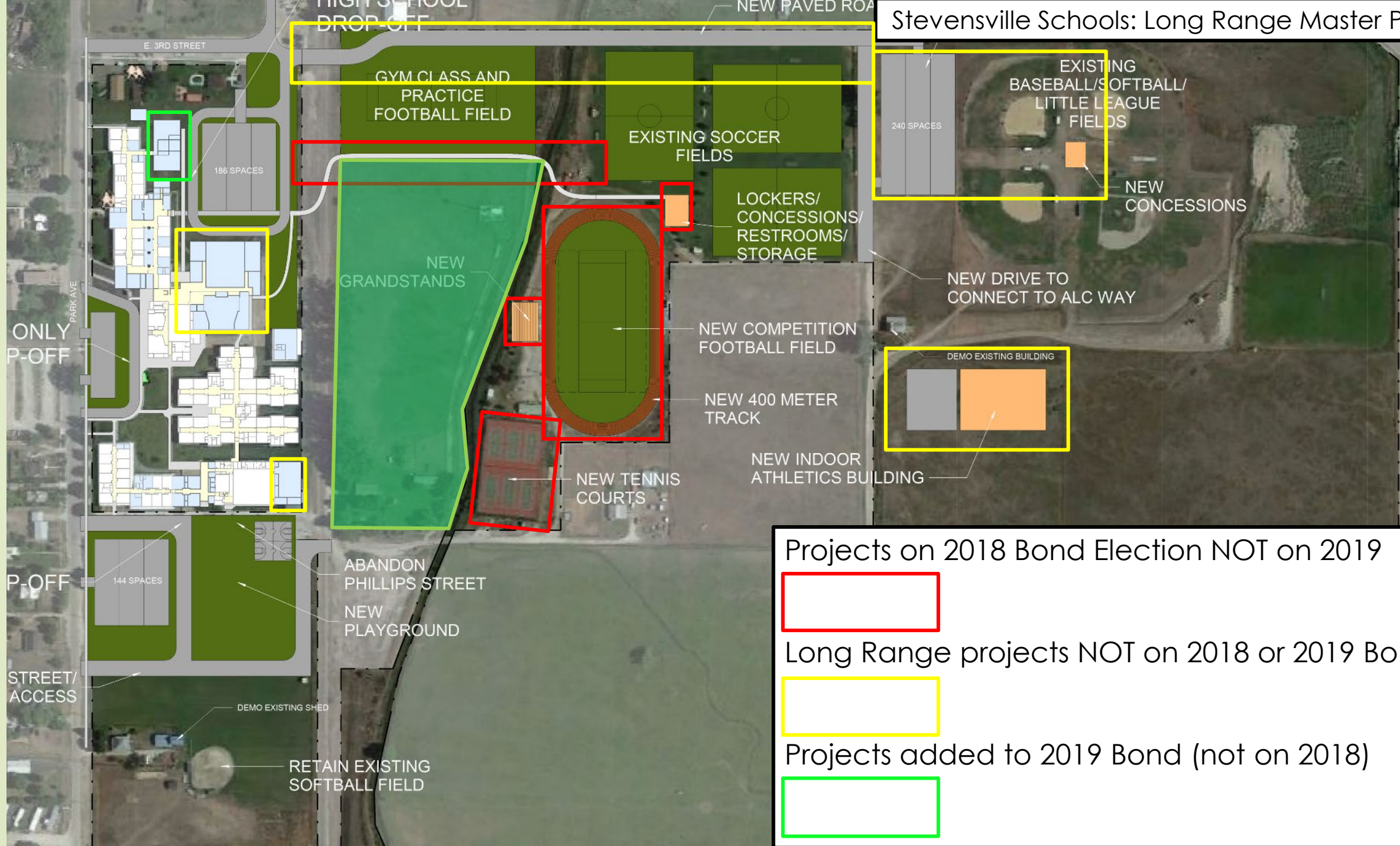
	Yearly	Monthly
Estimated High school Amount:	\$ 94.59	\$ 7.88
Estimated Elementary Amount:	\$ 55.59	\$ 4.63
Total:	\$ 150.18	\$ 12.51



Back Up Slides



Stevensville Schools: Long Range Master Plan



Projects on 2018 Bond Election NOT on 2019



Long Range projects NOT on 2018 or 2019 Bond



Projects added to 2019 Bond (not on 2018)



Stevensville Schools: Current Facilities with Construction Dates

